

MFGA Aquanty Forecasting Tool

Quick Start Guide

This guide is an overview of how to sign up and access the main tools available within the MFGA Aquanty Forecasting tool. More detailed resources will also be made available to all users.

Please direct any questions or feedback to mfga@aquanty.com

This guide covers how to:

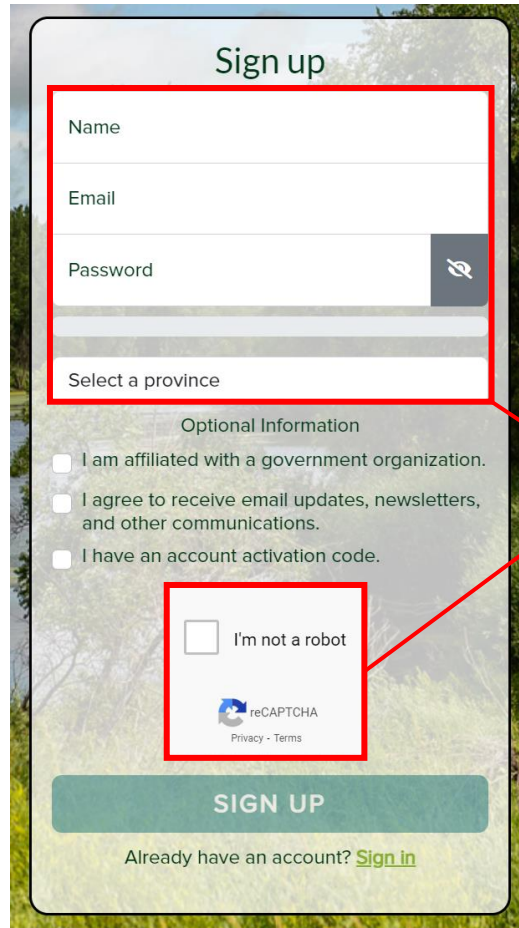
- Create an account 2
- Navigate the home page..... 3
- Check Forecast Feeds..... 3
- Access Remote Sensing Data 6

Create an account

Visit <https://waterforecast.mfga.net/signup> to create an account.

After entering your information, you will receive a confirmation email with a link to activate your account. Be sure to check all your email sub-folders and junk folder if this email does not arrive within a few minutes.

Please contact mfga@aquanty.com if you require any assistance during the account sign-up process.



The image shows a 'Sign up' form with the following fields and options:

- Name
- Email
- Password (with a strength indicator icon)
- Select a province
- Optional Information:
 - I am affiliated with a government organization.
 - I agree to receive email updates, newsletters, and other communications.
 - I have an account activation code.
- I'm not a robot (reCAPTCHA)

A red box highlights the Name, Email, Password, and Select a province fields. A red arrow points from this box to the text 'Required Fields'.

Required Fields

Navigate the home page

On the left sidebar, navigate to one of two map views:

- 1) **Assiniboine**
- 2) **Pembina**

From the map view you can view hydrologic forecasts and view and download satellite imagery for a custom (user created) area of interest.

From the home page you can also find your watershed and add it as a favourite through the “Add Favourite” option in the forecast feeds section of the page.

Any Areas of Interest you create in the Remote Sensing map view will be added to the home page.

Check Forecast Feeds

Choose one of two main map views

Water Forecast

DASHBOARD

- Home
- Forecast Feeds ▾
 - Assiniboine
 - Pembina
- Remote Sensing
- About App
- Glossary
- Feedback

Home

Available Forecast Feeds

Assiniboine

Pembina

Add Favourite

Click on an Area of Interest below to see more details.

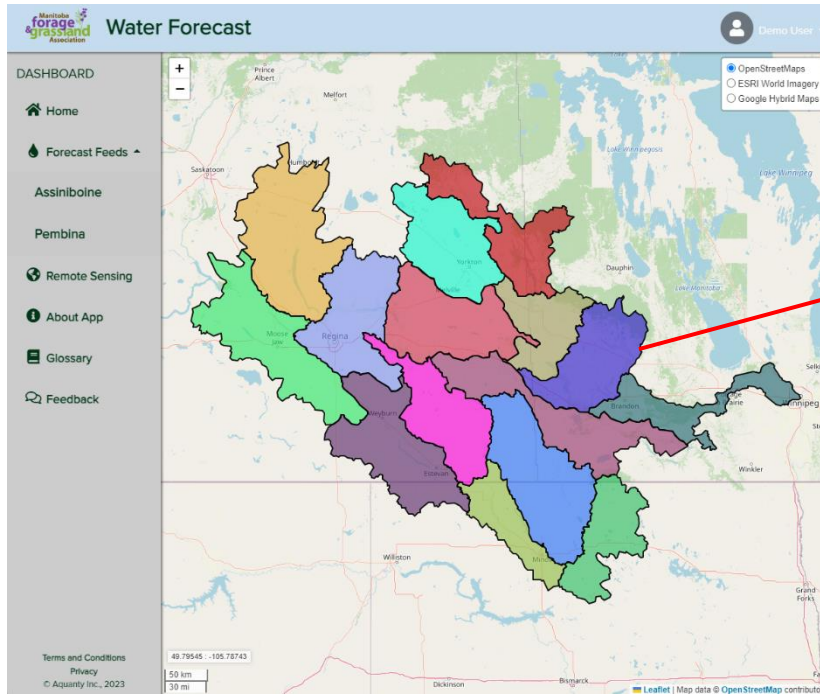
Test Area 1

Terms and Conditions
Privacy
© Aquantix Inc., 2023

Pin a specific watershed to your homepage

Areas of interest you create show up here

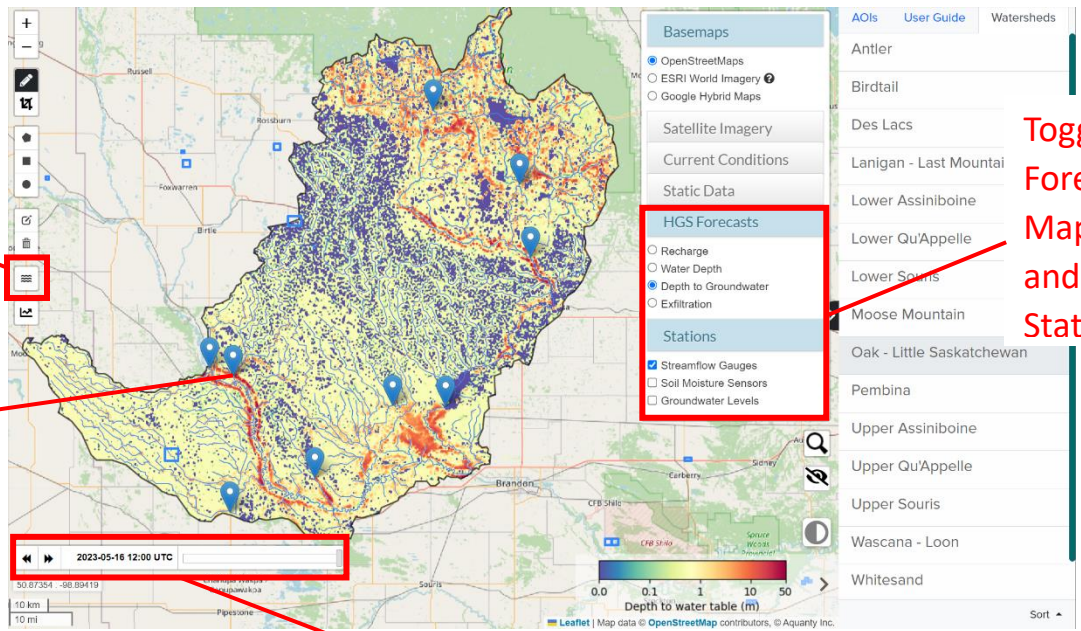
From the main Assiniboine Forecast Feed view, you can click on any watershed to see all available forecasts and data feeds.



Click on any watershed to see forecasts

Toggle between 7-day and 32-day mode


Click on stations to view observations and forecasts



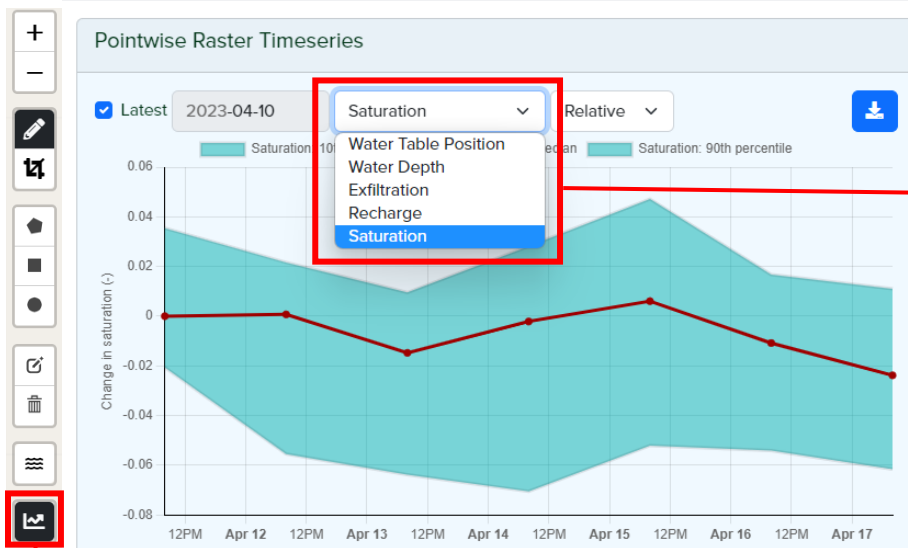
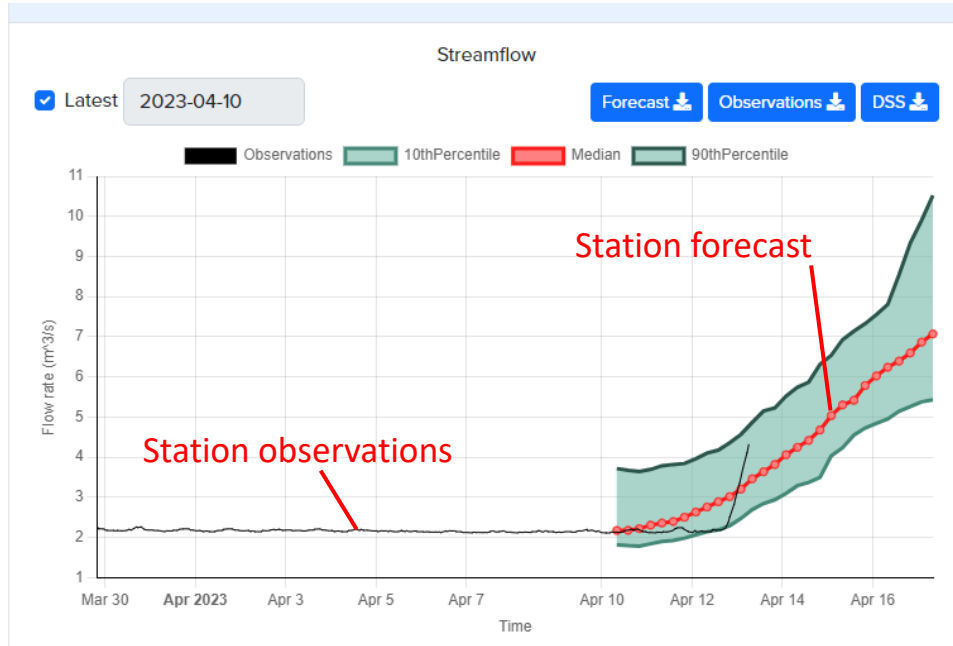
Toggle Forecast Maps and Stations

Time slider indicates the start date of the forecast

Once you are viewing the feed for a specific watershed you can turn map datasets and station locations on and off from the menu on the upper right.

To view a forecast for a specific location, toggle on the “drill-down mode”  button on the left side of map controls and then click that location on the map. All locations on the map will show a forecast, not just station locations. Where the data is available, clicking on stations will show observations in addition to the forecast.

Forecast plots appear as a pop-up when you click on a point or a station.



Choose what type of forecast to view for point

Toggle on this button in the map view to make this feature available

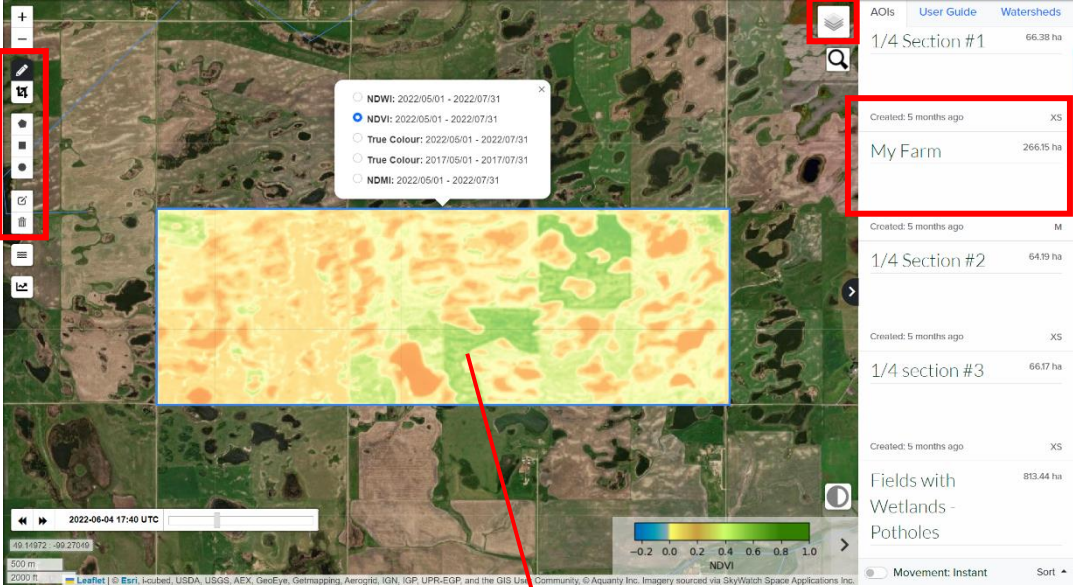
Access Remote Sensing Data

The remote sensing map view allows you to view more detailed information about any areas you are interested in. Create your own custom area of interest using the editing tools on the left side of the map view. Click on your area of interest to explore satellite imagery, various calculators, precipitation plots, and agroclimate plots.

Tools to create and edit areas of interest

Expandable menu to toggle map

Areas of interest you have created are listed here. Click to centre the map view on it.



The screenshot displays a web-based map interface. On the left, a vertical toolbar contains icons for creating and editing areas of interest. The main map area shows a satellite view with a semi-transparent data overlay in shades of yellow and green. A pop-up window above the overlay lists various data layers: NDWI (2022/05/01 - 2022/07/31), NDVI (2022/05/01 - 2022/07/31), True Colour (2022/05/01 - 2022/07/31), True Colour (2017/05/01 - 2017/07/31), and NDMI (2022/05/01 - 2022/07/31). A color scale legend for NDVI is visible at the bottom right of the map, ranging from -0.2 to 1.0. On the right side, a panel titled 'AOIs' lists several areas of interest, including '1/4 Section #1' (66.38 ha), 'My Farm' (266.15 ha), '1/4 Section #2' (64.19 ha), '1/4 section #3' (66.17 ha), and 'Fields with Wetlands - Potholes' (813.44 ha). A red box highlights the 'My Farm' entry in this list. A red arrow points from the text 'Click on an area of interest...' to a specific location on the map.

Click on an area of interest in the map to access satellite imagery, calculators, and site-specific data plots.